

India Ink Project

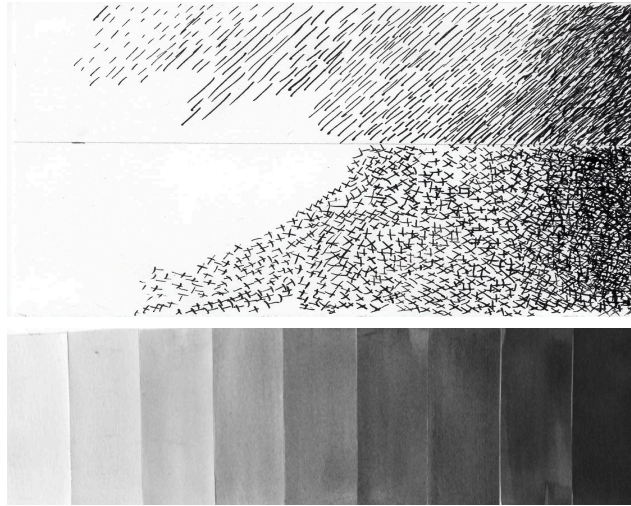
Read carefully

For this project, you will be using nibs (pen and ink) and brushes to apply india ink to a suitable surface (may be your sketchbook).. You will be creating 3 tonal scales; one with hatching, another with cross hatching, and a 3rd with ink and water applied using a brush (see below).

To do this, first draw 3 rectangles in your sketchbook.

Each rectangle should take up approximately $\frac{1}{3}$ rd of the page.

Fill the rectangles with hatching, cross hatching, and a tonal scale.

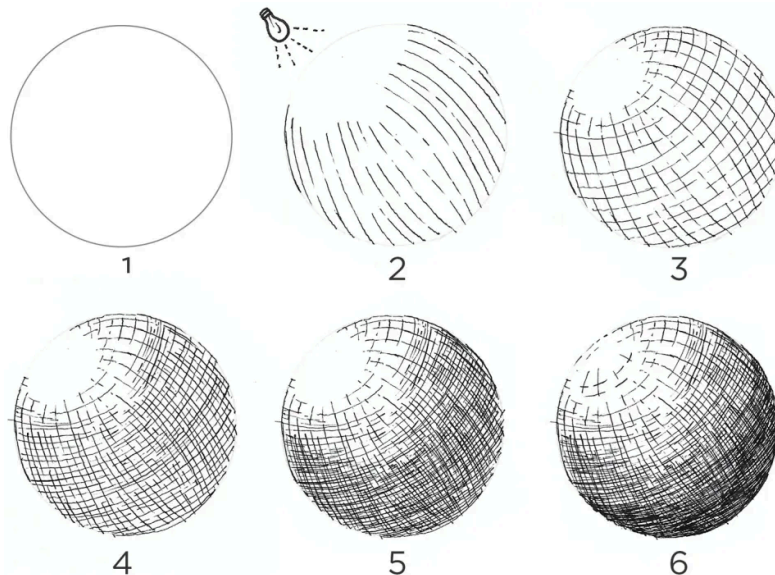


After you have completed your tonal scales, you will create 2 spheres.

Use a compass or mug to create the circle from which you will start).

Complete one sphere using cross hatching, and another using a brush and ink.

Below is an example of a sphere created using hatching

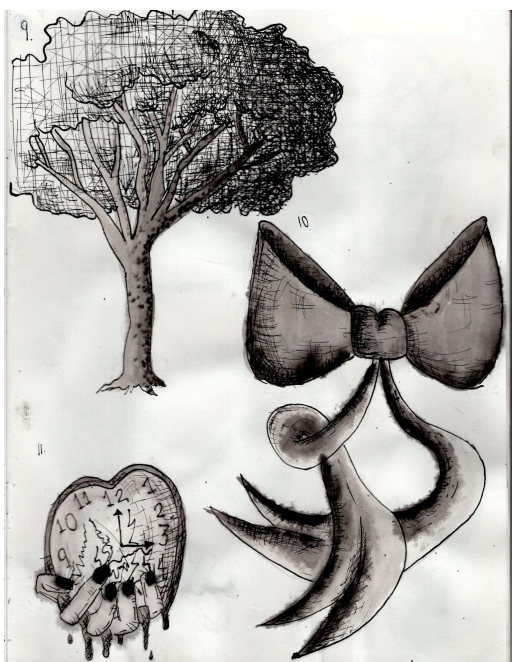
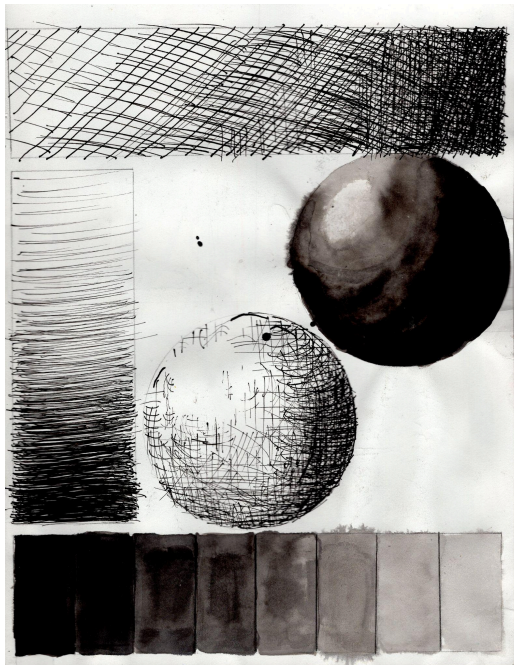


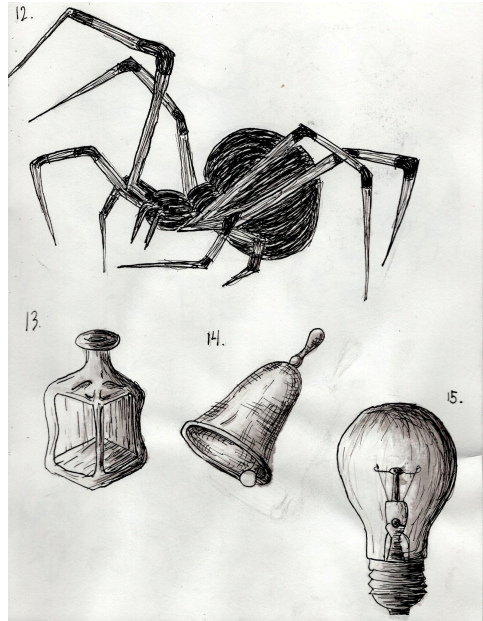
[This](#) links to the page this was taken from for your further skill development.

You will be handing in the following:

1. 3 rectangles; one with hatching using pen and ink, one with cross hatching using pen and ink, one showing a tonal scale created with brush, ink, and water
2. 2 spheres you have created with pen and ink/ ink and brush
3. 15 small pen and ink (some with brush and ink) drawings

Below is an example of a well done project. After the rubric are some examples of further student work.





	1	2	3	4
<i>Fountain pen (Show correct technique for hatching and cross hatching) Weight: 1.0</i>	<i>Does not approach expectation/ little or no effort exhibited</i>	<i>Approaches expectations</i>	<i>Meets expectations</i>	<i>Exceeds expectations</i>
<i>Washes (Multiple washes to show tonality/form) Weight: 1.0</i>	<i>Does not approach expectation/ little or no effort exhibited</i>	<i>Approaches expectations</i>	<i>Meets expectations</i>	<i>Exceeds expectations</i>
<i>Sphere (Shows good form) Weight: 2.0</i>	<i>Does not approach expectation/ little or no effort exhibited</i>	<i>Approaches expectations</i>	<i>Meets expectations</i>	<i>Exceeds expectations</i>
<i>Drawings (Creative and thoughtful) Weight: 2.0</i>	<i>Does not approach expectation/ little or no effort exhibited</i>	<i>Approaches expectations</i>	<i>Meets expectations</i>	<i>Exceeds expectations</i>

